



# Creeknet

Deptford London UK

## XF Symposium

20th/21st June 2017

Intensive property development in this area has already caused local disruption, pollution and inconvenience;

**Can low cost technologies and knowledge sharing improve awareness of issues?**

**How will people sustain neighbourhood networks?**

Visit the website for more details  
<http://deptfordcreek.net>



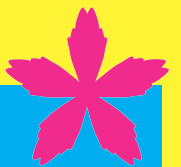
On Wednesday, we welcome MAZI partners and friends to the 'Knowledge Cafe' in the Stephen Lawrence Centre on Brookmill Road, followed by a picnic in the park and Anchorhold trail along the length of the tidal creek.



Tuesday begins at the Hoy Kitchen on Creek Road, with introductions to Creeknet and its DIY networks. 10am

At 3pm all are welcome to the free Low Tide Walk at the Creekside Discovery Centre (for over 8's)

**Join us over two days of social activities to discover more about changing conditions, play with ideas and technologies in use and meet some of the communities involved.**



Eventbrite